

COMMUNITY SERVICE COMMITTEE (CSC)

ARAMARK STRIKE GUIDELINES

Contact persons by shift:

- 1st: Malinda Daugherty: Dept 33
Melissa Schroyer-Ruiz: Dept 50
Lynn Howard: Dept 50
Darlene Acree: Crib
- 2nd: Jason Greene: Dept 15
Liz Wood-Greene: Dept 83
- 3rd: Jeff Matis: Dept 43
Nicole Hinojosa Weaver: Dept 50

Responsibilities as a Union Brother/Sister

Strike pay per week is \$250.00. The first week is a waiting week with no compensation until last week of strike. Each member will have a four (4) hour responsibility to strike and must sign up. We plan to cover five (5) gates, with six (6) shifts per day seven (7) days a week. 12am (midnight)-4 am, 4am-8am, 8am-12pm (noon), 12pm (noon)-4pm, 4pm-8pm, and 8pm-12am (midnight). Strike captains will be determined by Shop Committee and will be available when picketing. Strike schedule will be comprised by Strike Committee. Each member is responsible for their designated time slot. If you cannot fill your time slot, you are responsible to trade with another member to fill the designated time slot, and must notify Strike Committee (8) eight hours in advance before changing your time slot. Every active member must show up to strike. Retirees are permitted to walk picket lines/strike. Family & friends are allowed on picket lines as well. Some members may have prior vacations scheduled, and the union will work with those members for scheduling strike duty. Membership will also take into consideration, those members who have a long-distance drive for strike scheduling. To receive strike pay, you must come in to the Union Hall in person! No one else can pick up your check for you. NO EXCEPTIONS. The time your check is available is determined by the International Union. This may or may not coincide with your strike duty.

Be prepared when picketing. Do not resort to any type of vandalism. Alcohol/illegal substances are not permitted on strike lines. Please be sober and coherent on picket lines. We do not want any arrests from Parma Police. **DO NOT TALK TO THE MEDIA / NEWS REPORTERS, PLEASE DIRECT THEM TO THE UAW LOCAL 1005 HALL FOR ANY AND ALL INFORMATION.** Do not park your vehicle on GM property. Park at the Union Hall. There will be a shuttle at the hall to transport members from the hall to gates. We will be addressing all access points of entry to the building. When picketing, members must keep moving, do not stand in one place to hinder incoming traffic. Please use your best judgement, and do not put yourself in danger. Do not stand in the middle of driveways, however, you may walk back and forth on public property (sidewalk). CSC members, E-board, Union officials, Benefits Reps, and supplemental members, will be at the hall every day to answer questions, and help members with any concerns they may have.

It is recommended that you attend your strike duty assignment. REMEMBER: WE ARE NOT A RIGHT TO WORK STATE! If you do not show up for your scheduled time, you will not be eligible for strike pay, and benefits.

Sick Leave and Workers Comp

If you are currently on sick leave/workers comp at the time of the strike occurs, you are not responsible for strike duty. Please do not show up for strike duty. If you are on sick leave/workers comp at the time of a strike, your benefits will continue until your doctor releases you to go back to work. You are not entitled to strike pay if you are receiving sick and accident benefits, or receiving workers compensation.

Your medical benefits will continue to be in effect until during the strike. Prescriptions will be covered. Dental benefits will not be covered. Vision benefits will not be covered. Hearing aides are not covered. Please continue to use your regular medical card until it is denied. Please visit the union hall for a new identification card.

Acquiring work (Supplemental Job) during strike

Members may acquire supplemental or additional employment during the strike. However, if you earn more than \$250.00 per week, you will not receive strike pay. The work you acquire at the time of the strike, shall be from a legitimate business or company, to qualify for nonpayment. **EVEN IF YOU ALREADY HAVE A SECOND SOURCE OF INCOME PRIOR TO A STRIKE AND EARN THE \$250 YOU ARE NOT ELIGIBLE FOR STRIKE PAY.** You are ineligible for unemployment benefits if you refuse strike pay or otherwise, since there is a refusal of work.

Additional help and services while on strike

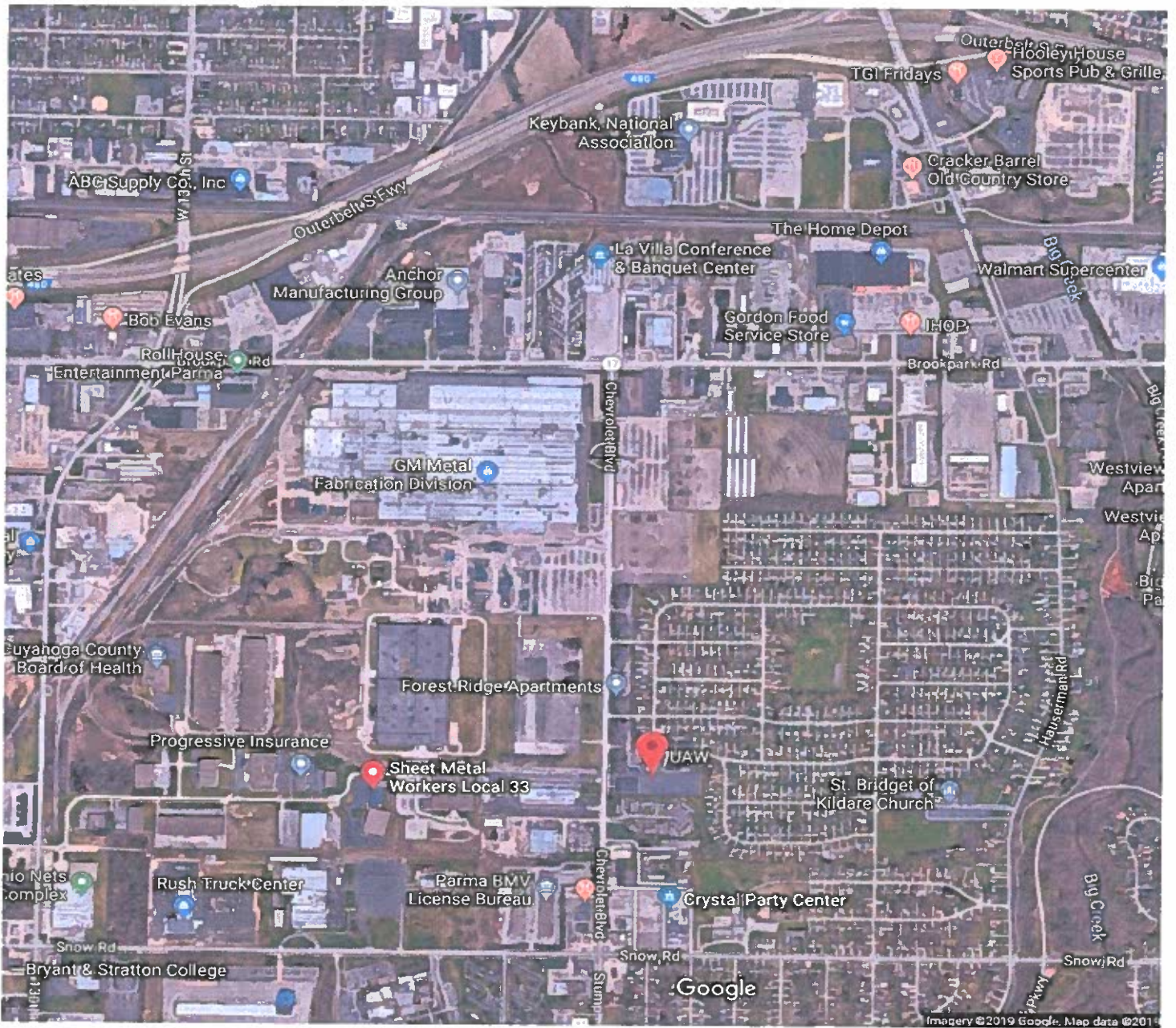
There are many community action committees that help people in time of need. Additional organizations are always being added and updated with contact information and procedures for assistance. The CSC is constantly researching for additional organizations and updating the list. Local churches and food banks are willing to help out in time of need as well.

Monthly Bills for Household

It would be helpful that you contact your mortgage company, auto loan companies and utility companies to explain the situation at hand, immediately, as a strike occurs. DO NOT WAIT! Hopefully they are understanding enough to help work through the difficult times we all go through. Sample letters will also be available that can be presented to these organizations for a detailed explanation.

Misc.

More information will be posted on the UAW Local 1005 website as it arises. A hotline informational phone number with a recorded message with strike information can be reached at 1-440-884-7979 ext 18. This will be an automated message to validate strike activity. No messages can be left. Please update all your personal information with the Union Hall. If any member has any questions regarding the potential possibilities of a strike they can contact their CSC rep by shift or see any union official.



Union Hall Location: **BIG RED DOT**

